



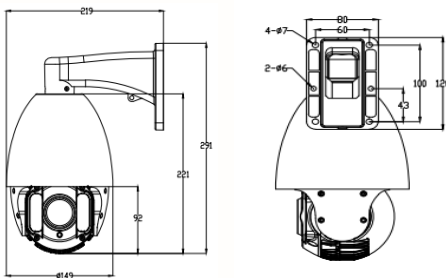
2MP H.265 Starlight 12x IR High Speed Dome IP Camera

Features

- Sony 1/2.8" 2.1MP STARVIS sensor
- Starlight sensitivity
- 12X optical zoom
- 80m long range IR with adaptive illumination angle
- H.265 / H.264 / M-JPEG dual streams
- Micro SD slot for recording
- Enhancements: T-WDR (120dB), 3D NR, defogging
- ONVIF (Profile S)
- Power over Ethernet (PoE)



Dimensions



Specifications

Model	PZ2-T310
CAMERA	
Image Sensor	Sony 1/2.8" 2.1MP STARVIS sensor
Effective Pixel	1920 (H) x 1080 (V)
Frame Rate	25/30fps
Resolution	up to 1920 x 1080 (main stream); up to D1 (sub stream)
Video Compression	H.265 / H.264 / M-JPEG (16kbps – 8000kbps)
Open Standard	ONVIF (Profile S)
Min. Illumination	0.0 lux (IR on); 0.02 lux (colour, IR off), 0.002 lux (B/W, IR off)
IR Range	80m
Lens	12X optical zoom, f=4.7–56.4mm
Angle of View	6.4° ~ 60.9°
Electronic Shutter	1/15 (Max) ; 1/5000 (Min)
S/N Ratio	≥50db
CONTROL	
Video Adjustment	Brightness, contrast, saturation, sharpness, hue
3D Noise Reduction	Close / low / mid / mid-high / high
True WDR	Close / low / mid / high
Video Compensation	BLC / HLC / off
Auto Gain Control	Auto / on / off
Day / Night	Auto / color / B/W / external
Privacy Mask	8 zones
ROI	4 zones
Mirror	Close / horizontal / vertical / 180° rotation
Defogging	Close / open
Slow Shutter	Close / open
TELEMETRY	
Panning Angle	360°
Panning Speed	0.1°-200°/sec (manual); 240°/sec (preset)
Tilting Angle	90°
Preset	256
Patrol	8
Tour	8
Pattern	4
Home Position	Preset / patrol / tour / pattern / off
EVENT	
Event Type	External alarm, video motion detection, video tamper, network interruption
Video Analysis	Tripwire, loitering, missing / unattended object detection, crowd monitoring
Action Type	Dial-back, snapshot, relay switch control, email notification, micro SD card recording
External Alarm Input	1
Motion Detection	4
Relay Output	1
COMMUNICATION	
Network	RJ-45, 100 base-T
Protocol	TCP/IP, UDP, HTTP, DHCP, RTSP, DDNS, SMTP(SSL), PPPoE, UPNP, NTP, P2P, FTP
Concurrent Connection	4
Audio Input	1
Audio Output	1
Video Output	1 (CVBS)
MISCELLANEOUS	
Weather Protection	IP66
Operating Environment	-30 ~ 50°C / 90% relative humidity (no condensation)
Power Supply	DC24V/PoE (IEEE802.3at), 30W
Dimensions (mm)	291 (H) x Φ149 (D)
Weight	4kg

